

Spill Control

Bund Water Control Unit - SG629

£850.00 (FREE delivery)

What is a Bund?

A bund is a secondary containment area that is constructed around oil (or chemical) storage facilities to prevent leaks and spills polluting watercourses. Bunds need to be watertight to be effective and therefore bunded areas collect rainwater, which becomes polluted by the normal day-to-day drips from the storage facility. The polluted rainwater must be removed in an environmentally safe manner so that the bund retains its full capacity to contain a major spill from the storage facility, and avoid an oil pollution incident. Case studies show the only economical and environmentally safe method of removing polluted water from a bunded area is by using an automatic, failsafe "intelligent" pump that eliminates human error.

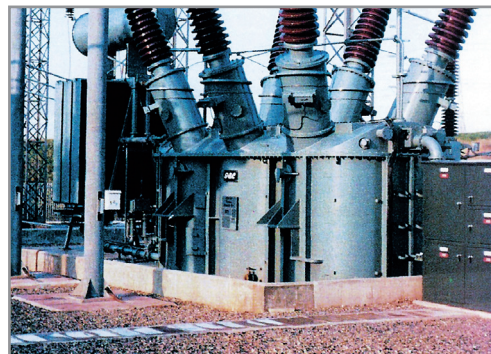
What is a Bund Water Control Unit?

A Bund Water Control Unit is a low maintenance automatic pumping system that detects the difference between oil and water, and safely pumps the water* only out of the bund. The pumped water can be discharged into the clean water drainage system leaving the oil behind in the sump, allowing for economical and easy removal by a waste management company. At all times failsafe features will warn you of any risk of a potential pollution incident.

How can a Bund Water Control Unit help you?

Fewer visits by your waste management company will be required because only the oil (and no water) will need to be removed resulting in significantly reduced waste management costs. The unit will provide a safe and dry working environment for your site maintenance staff and is a positive action for protecting the environment which will contribute to receiving and maintaining ISO 14001 accreditation (showing best environmental practice).

Bund water control units are offered with an installation and service package.



Example of a typical concrete bund containing an oil filled transformer.



Control Panel (shown installed on bund wall) can be sited at other locations eg. site office.

*Rainwater containing less than 5mg of oil per litre of water (5 parts per million), which is regarded as safe by The Environment Agency, is discharged into the clean water drainage system.



The unit can be installed in any type of bund. Eg. brick, steel, concrete.

Sui Generis International Ltd.

The Chandler's Centre
Hythe Quay
Colchester
CO2 8JF

Tel: 01206 798 798
Fax: 01206 866 666
Email: info@sui generis.co.uk
www.sui generis.co.uk

Fibreglass Linings
Industrial Coatings
Surface Preparation
Spill Containment

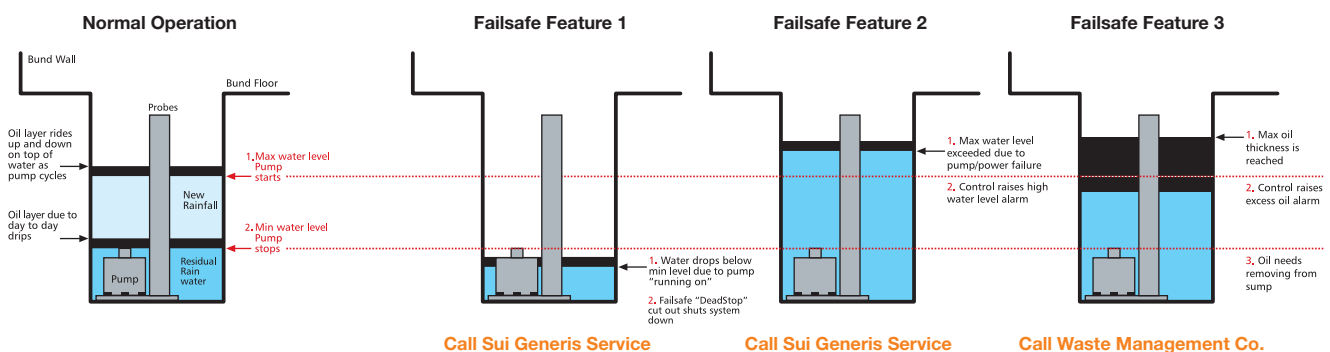
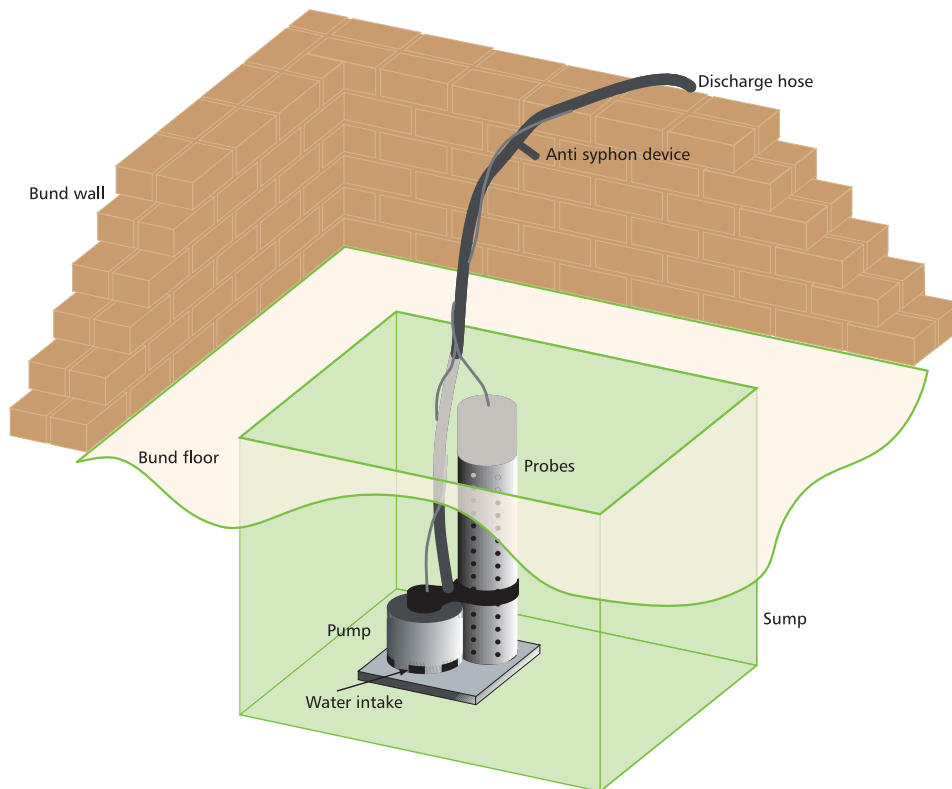
Fibreglass Mouldings
Anti-slip Stair Covers
Anti-slip Floor Sheets
Fibreglass Grating

Spill Control

Bund Water Control Unit - SG629

How does it work?

The pump/probe assembly, made from robust non-deteriorating materials, is placed in the sump of the bund. The probe sensors monitor the sump liquids for the presence of water or oil at site/sump specific levels. The control, located at the site-owner's discretion, switches the water pump on and off at the appropriate levels. High water and excess oil levels in the sump, and power failure, are indicated by LED signals on the control which may be extended as alarms if linked to the site telemetry system.



Sui Generis International Ltd.

The Chandler's Centre
Hythe Quay
Colchester
CO2 8JF

Tel: 01206 798 798
Fax: 01206 866 666
Email: info@sui generis.co.uk
www.sui generis.co.uk

Fibreglass Linings
Industrial Coatings
Surface Preparation
Spill Containment

Fibreglass Mouldings
Anti-slip Stair Covers
Anti-slip Floor Sheets
Fibreglass Grating

Spill Control

Bund Water Control Unit - SG629

The benefits to your business.

Reduce your site operation costs

- Reduced waste management costs.
- Reduced risk of expensive fines and clean up costs.

Provide a safe and dry working environment

Improve your environmental corporate image

- A positive action for protecting the Environment.
- Designed to comply with Oil Storage Regulations and The Environment Agency's Pollution Prevention guidelines.
- Contributes to receiving and maintaining ISO 14001 accreditation (showing best environmental practice).
- Use of a solution recognised by The Environment Agency as being BATNEEC (best available technology not entailing excessive costs).

Technical details

	Product Code	Dimensions (mm)			Materials	Contact relay alarm outputs			Pump Output		Minimum Sump Dimensions (mm)
		h	w	d		high oil	high water	power failure	3m head	5m head	
Control	022 series	300	250	160	PVC	yes	yes	yes			
	027 series	330	330	150	s steel	yes	yes	yes			
Drop-in/pull out Sump assembly:											300 300 300
Probe	033	507	89	89	PVC						to accommodate
Pump standard	GSA 1002	245	155	155	s steel				125 l/min	80 l/min	single pump
large	GSA 1015	285	155	155	s steel				250 l/min	200 l/min	

NOTE Standard systems require a 240VAC/13 amps rated supply but can be modified to accommodate alternatives and to operate in Zone 0 conditions

Both series of controls are offered as a:

- Single model to operate or 1 probe/primary pump in 1 sump
- Dual model to operate or 1 probe/primary pump in each of 2 sumps or 1 probe/primary pump and standby pump in 1 sump



Sui Generis International Ltd.

The Chandler's Centre
Hythe Quay
Colchester
CO2 8JF

Tel: 01206 798 798
Fax: 01206 866 666
Email: info@sui generis.co.uk
www.sui generis.co.uk

Fibreglass Linings
Industrial Coatings
Surface Preparation
Spill Containment

Fibreglass Mouldings
Anti-slip Stair Covers
Anti-slip Floor Sheets
Fibreglass Grating