

GRP Riser Flooring and Installation

Our GRP riser system offers a first-class safety solution for your riser needs, be it residential, commercial, new build or refurbishment.

Our expert team will design, manufacture and install a tailored support system for any riser flooring situation that considerably outperforms conventional steel or timber systems.

GRP riser grating offers a strong, lightweight and versatile flooring solution for your service risers, riser voids and riser shafts.

GRP Grating Risers

The fibreglass grating is cast in one piece combining a resin matrix with fibre reinforcement resulting in a product of outstanding strength, load capacity and corrosion resistance. The mould based manufacturing process gives the grating bidirectional strength meaning that service cut outs made in the grating do not affect the overall strength of the panel.

GRP grating can be up to 80% lighter than steel meaning easier transportation around site without the need for heavy lifting equipment. Installation is also considerably faster as the flooring can be manually handled into position and can be easily cut using standard hand power tools.

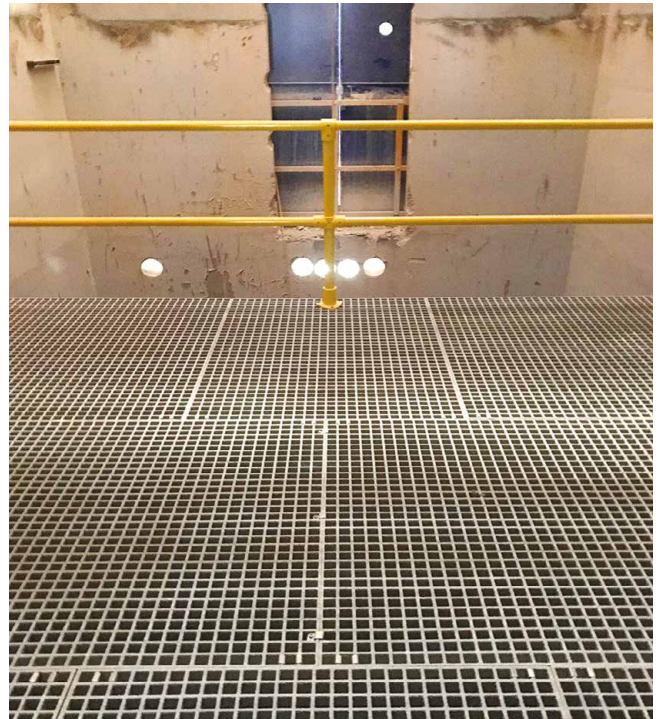
A quartz grit is applied to the top surface to provide one of the most effective anti-slip finishes possible to this GRP riser flooring.

Fabrication

Our team can create CAD drawings to deliver a full design during the production phase.

The service riser system will be cut to the exact measurements from approved drawings at our manufacturing plant in Essex.

Should it be necessary the GRP grating can be manually trimmed on site using standard power tools. When riser services are ready to be installed, the grating is easily cut using a jig saw to form the required holes.



Installed GRP grating riser floor with safety handrail.



Riser shafts prior to GRP mesh flooring.

For a quote & FREE site survey call **01206 798 798**
to speak to our specialist team. www.suigeneris.co.uk/grating

Industrial Linings
Industrial Coatings
Spill Containment

GRP Mouldings
Anti-slip Stair & Floor
Industrial Grating

GRP Riser Flooring and Installation

Installation

Our experienced riser installation teams are fully trained and equipped to deliver bespoke first-class safety solutions and advice on new builds or refurbishments, whatever the size of your project, anywhere in the UK.

Installation Options:

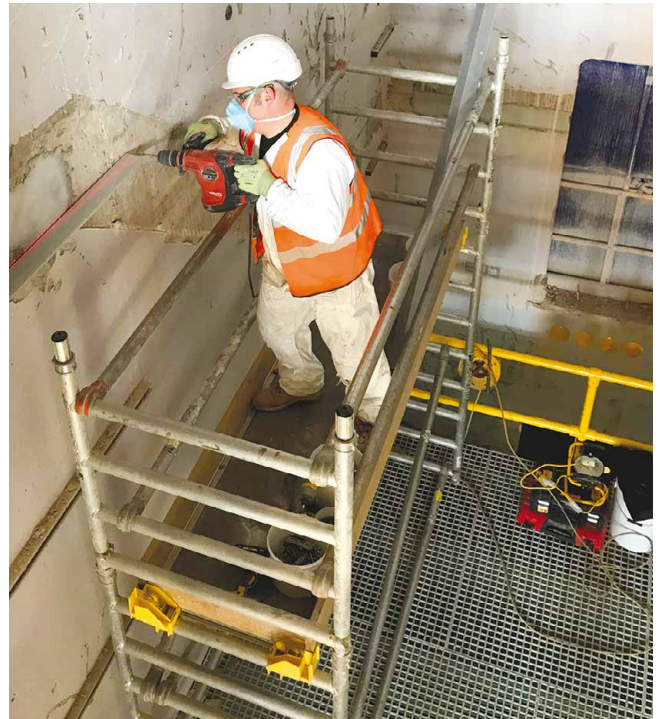
- Easily cast into the concrete slab.
- Supported on a rebate cast into the concrete.
- Perimeter fixed in void using GRP angle supports.
- Void fixed with cross members using GRP I beam.

Safety First - Health and Safety Qualifications

Health and Safety is our foremost concern in everything we do and our site operators hold the following certifications:

- **CSCS (Construction Skills Certification Scheme)**
- **SSSTS (Site Safety Supervisor Training Scheme)**
- **PASMA – Mobile Tower Scaffolding**
- **Emergency First Aid at Work**
- **Asbestos Awareness**
- **City and Guilds Confined Spaces Training**
- **CITB Health and Safety Awareness – Site Safety Plus**
- **EUSR – National Water Hygiene Scheme**
- **ECITB Safety Passport**
- **Sentinel**
- **WAH Harness, Ladders, Access Towers Training**
- **Safetymen – Safe Use of Abrasive Wheels**
- **Safetymen – IPAF Operator Training**
- **Safetymen – Portable Power Tools**

Our operatives also receive training on our Quality Management System to ensure that we achieve the highest standards of workmanship on site in a safe and professional manner.



Placement of GRP angle supports to supplied datum levels.



Riser Floor fitted at required floor datum height, ready for service penetrations.

For a quote & FREE site survey call **01206 798 798**
to speak to our specialist team. www.suigeneris.co.uk/grating

Industrial Linings
Industrial Coatings
Spill Containment

GRP Mouldings
Anti-slip Stair & Floor
Industrial Grating

GRP Riser Flooring and Installation

Choosing the GRP grating panel for your riser system

Standard GRP Grating:

Practically any service riser opening size can be accommodated using different panel sizes that can be joined together with clips to cover the required area.

Cut from standard size panels:
1985 x 996mm, 3010 x 996mm or 3660 x 1220mm.
25, 38 or 50mm thickness.

Green RAL 6029, Grey RAL 7035 or Yellow RAL 1003.

Mini-Mesh GRP Grating:

Cut from standard size panels:
2007 x 1007mm, 4047 x 1007mm. 30mm thickness.

Grey RAL 7035.

Bespoke colours (longer lead times).

GRP Grating for riser voids and service risers

- Maintenance free - no painting required
- Extremely hard wearing, durable
- Long product life
- Lightweight - lighter than steel
- Exceptional mechanical strength
- Ease of installation and fabrication
- No special cutting equipment required
- Non sparking - can be site cut, no hot works required
- Low design limitations
- Non slip quartz gritted surface
- Superior corrosion resistance
- Impact resistance
- Non-conductive - no earthing needed
- Fire resistance
- UV resistant
- Long lasting - 20+ year lifespan

Benefits

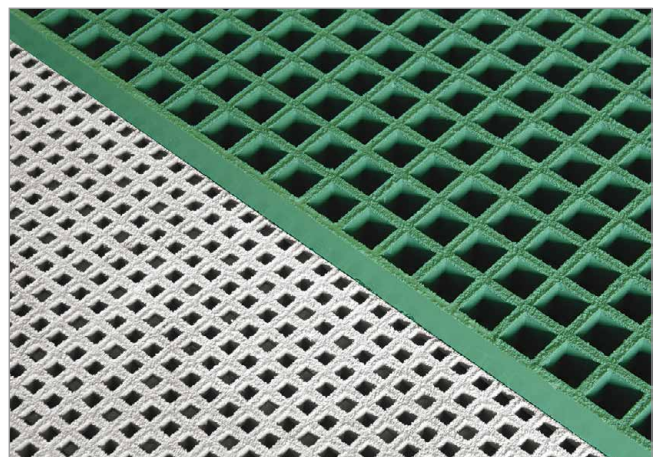
- Protects your workplace, environment and personnel
- Maintenance free



Standard GRP Grating.



Mini-Mesh GRP Grating.



Standard and Mini-Mesh Grating comparison.

For a quote & FREE site survey call **01206 798 798**
to speak to our specialist team. www.suigeneris.co.uk/grating

Industrial Linings
Industrial Coatings
Spill Containment

GRP Mouldings
Anti-slip Stair & Floor
Industrial Grating