



GeoMet
Responsible Seating, Water Features & Planters

**MODULAR SEATING, WATER FEATURES
AND PLANTERS
BY**

suigeneris



ABOUT US

GeoMet offers a modern, sustainable alternative to traditional outdoor furniture.

Handcrafted in the UK, each piece is built to the highest standards, offering bold aesthetics, exceptional strength, and long-term weather resistance in even the most demanding environments.

Unlike timber, aluminium or PVC, GeoMet furniture won't warp, crack, or corrode, and requires minimal maintenance throughout its lifespan.

With GeoMet, you get high-quality, contemporary furniture designed to perform beautifully, built to last, and made with sustainability at its core — all backed by a 5-year guarantee for complete peace of mind.

SUSTAINABILITY

All GeoMet products are made using recycled plastic bottles and low-styrene resin, diverting over 1 million bottles from landfills annually and significantly reducing our carbon footprint.



Striving to deliver products which are 100% recyclable by 2030



Over 1 million plastic bottles recycled every year



Working towards using energy supplied entirely from renewable sources



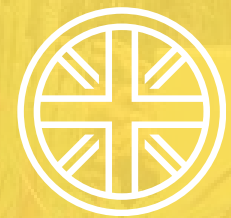
Committed to reaching net-zero for our scope 1 & 2 emissions by 2030



WHY CHOOSE GEOMET?

GeoMet is the smart choice for bold, sustainable, and long-lasting furniture. With customisable designs, unbeatable durability, and low lifetime costs, it's the perfect solution for transforming any space with minimal maintenance.

- Offers contemporary or traditional designs for any setting
- Available in most BS/RAL colors
- Low maintenance and easy to clean
- Highly durable—won't distort, become brittle, or corrode
- Cost-effective investment for short and long term



**Made in
the UK**



**Quick
Delivery**



**Nationwide
Installation**



**Any
Colour**

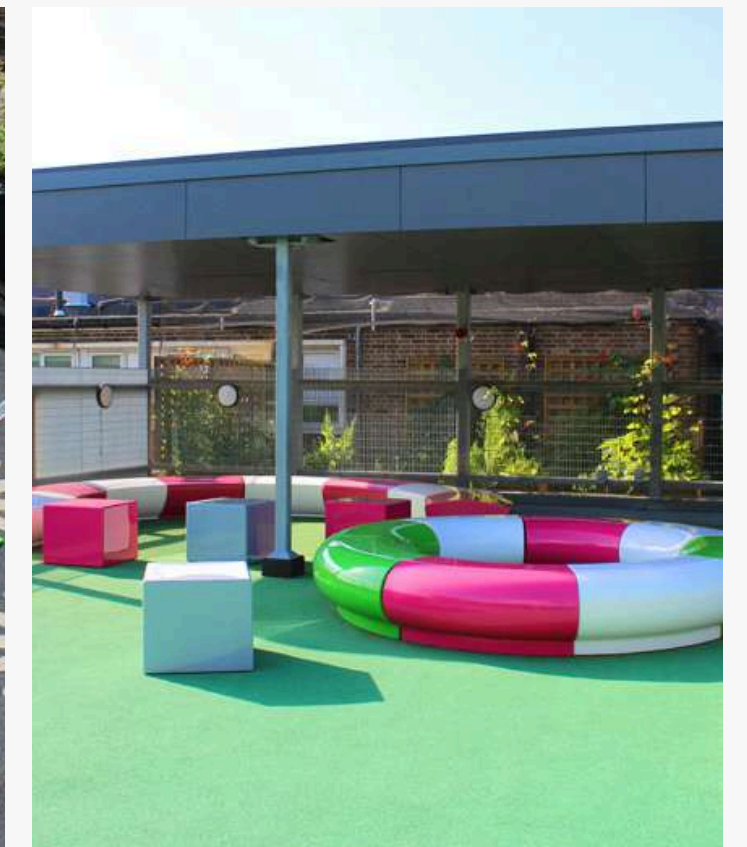


MODULAR SEATING

Transform your urban, commercial & garden landscapes

GeoMet is a flexible, modular furniture range designed for urban spaces, recreational areas, and commercial interiors. Handmade in the UK from durable, weatherproof composites, each piece can be mixed, matched, or used as a bold standalone feature.

Available in any RAL colour, we offer complete freedom to match branding, design schemes, or creative visions. Built for long-term performance with minimal maintenance, and quantity dependant, most orders are manufactured and delivered within 2 weeks.



**5
year
Guarantee**

MODULAR SEATING RANGE

GeoMet



Halo



Corona



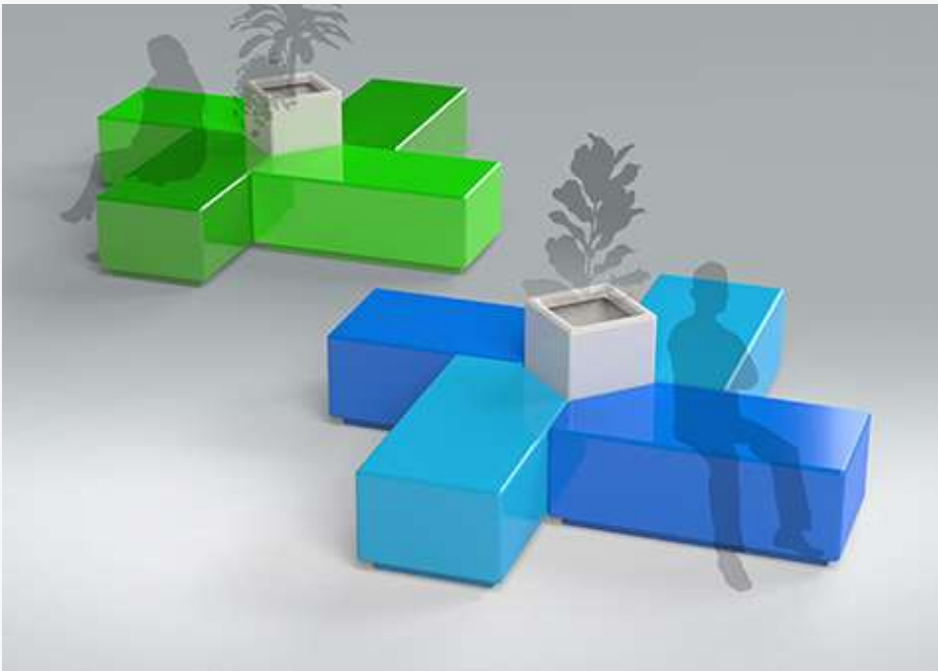
Arc



Serpentine



Urban



Island



Bench



Morph



Arena



Pompidou



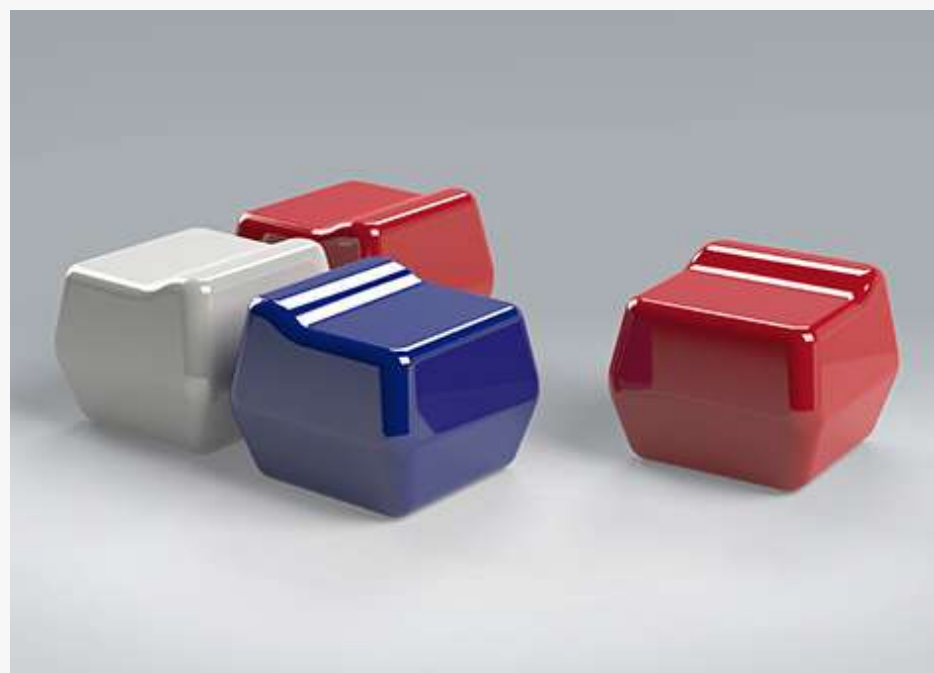
Cube



Quattro



Twist



Cubist



Drum



Rondo



MODERN WATER FEATURES

Create a bold focal point for both outdoor landscapes and interior spaces.

Our Corona Pond Water Features are handcrafted in the UK from durable, weatherproof composites, offering long-term performance with minimal maintenance.

Specified for commercial environments, public spaces, and prestigious projects like the Chelsea Flower Show, our water features combine contemporary design with proven durability.

Available in any RAL colour, they are easy to install and provide a stunning centrepiece for plazas, gardens, campuses, and leisure developments.





PLANTERS

Combine bold design, lasting durability, and complete colour flexibility to transform outdoor and indoor spaces.

GeoMet planters bring contemporary style and performance to outdoor and interior spaces.

They are designed to withstand the elements with minimal maintenance, while enhancing landscapes with bold colour and form.

GeoMet planters can be tailored to complement planting schemes, architectural designs, or corporate branding. Strong, lightweight, and easy to install, they offer a flexible, long-term solution for streetscapes, commercial developments, campuses, and public spaces.



PLANTER RANGE

GeoMet



Halo



Corona



Cube



Quattro



Twist



Drum



Rondo



Planter Insert

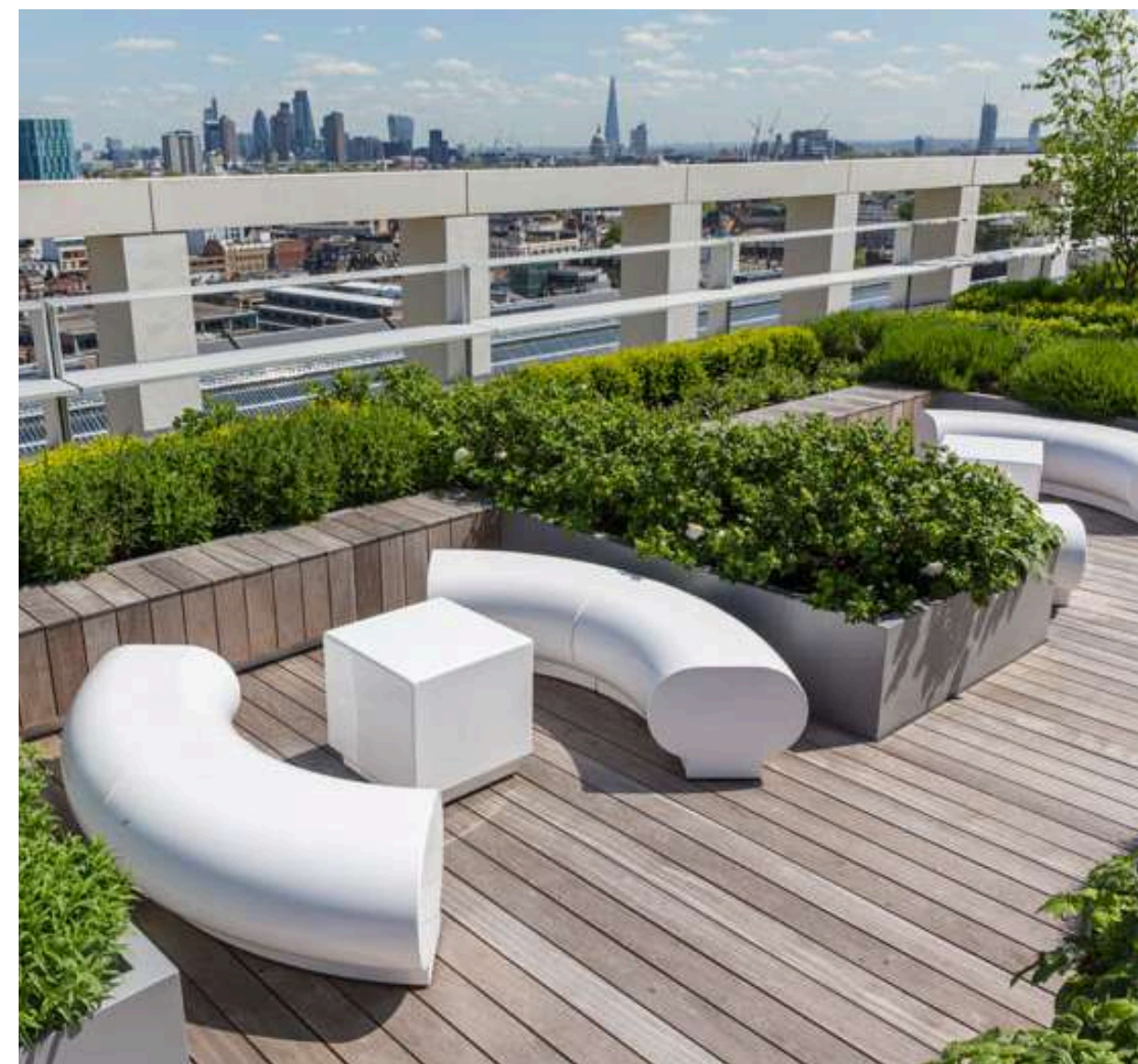
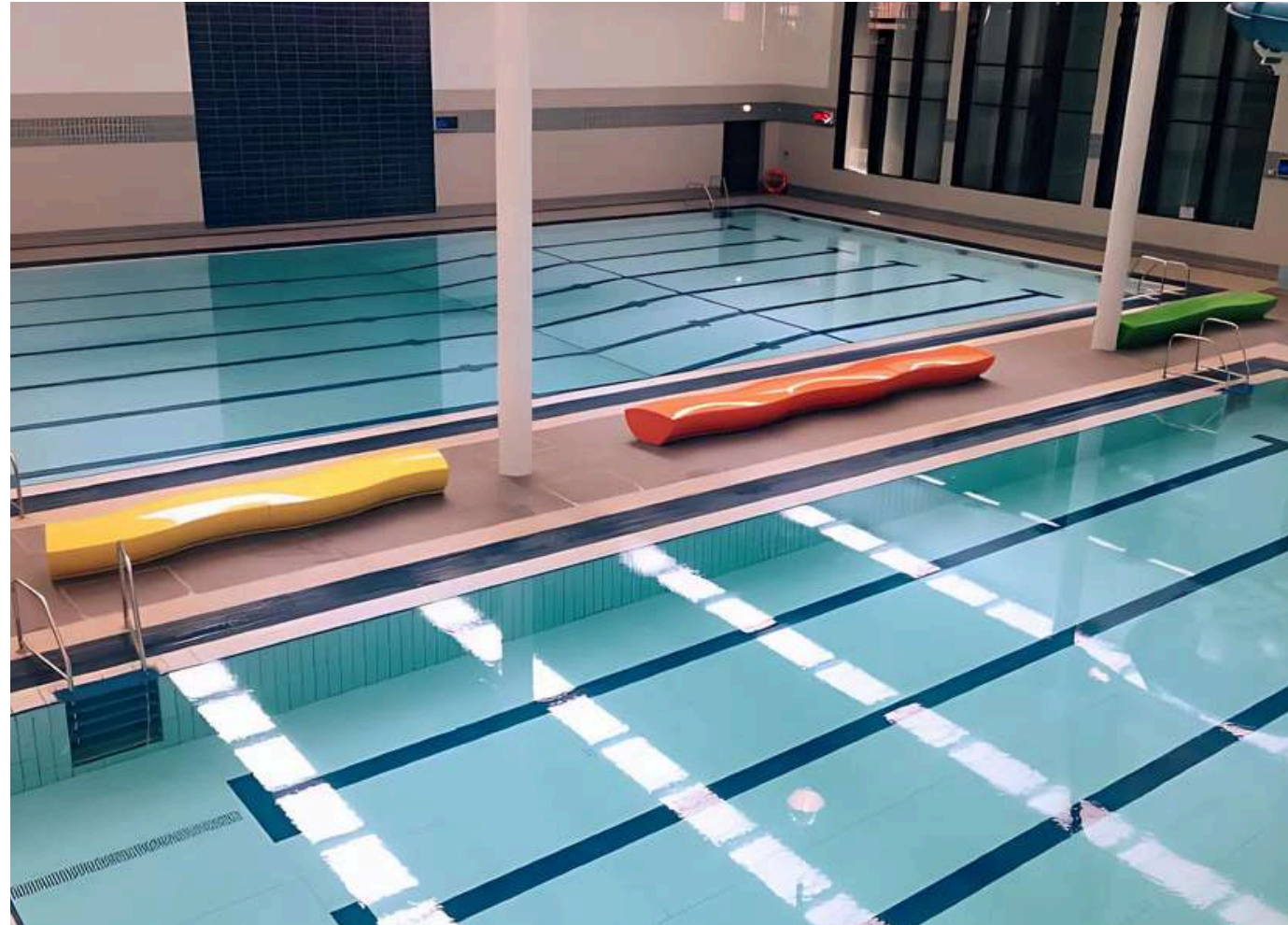


BESPOKE PLANTER INSERTS

Easy planting solutions for any interior or exterior space.

GeoMet planter inserts are custom-made to your exact size, shape, and colour requirements, offering a flexible solution for both interior and exterior planting schemes. Manufactured from tough, lightweight composite materials, each insert can simply be dropped into an existing planter or container to create a watertight, durable lining. Ideal for raised beds, large landscape displays, and commercial installations, our bespoke inserts provide a perfect fit and finish, adding versatility, longevity, and ease of maintenance to any project.







COMMITTED TO COMPLIANCE

All GeoMet products are manufactured to the highest standards, in full compliance with UK regulations and industry best practices. We operate under a certified ISO 9001:2015 Quality Management System, ensuring consistent product quality through robust internal processes. Our commitment to sustainability is reflected in our ISO 14001:2015 certification, which recognises our efforts to minimise environmental impact through responsible manufacturing. Every product is built to perform safely and reliably in commercial, public, and private sector settings.

