



# ENCLOSURES & HOUSINGS

---

**sui**generis





# ABOUT US

We're proud to be one of the UK's leading manufacturers of high-performance fibreglass (FRP) products. Since we started back in 1996, we've built our reputation on providing reliable, durable, and cost-effective solutions that help protect people, property, and the planet.

From our base in Colchester, Essex, we design, manufacture and install a wide range of FRP products – from anti-slip flooring and spill containment systems to bespoke mouldings, industrial grating, linings, and even modular furniture. Whether you need a one-off item or a tailored solution for a complex project, we're here to help.

What sets us apart is our commitment to quality and customer care. We're ISO 9001 certified, and we're also accredited by Link Up, Achilles, and Constructionline – so you can trust us to get the job done right, safely and to the highest standards.

Whatever your FRP challenge, we're here to solve it – with friendly advice, industry know-how, and great service from start to finish.

## SUSTAINABILITY

All GeoMet products are made using recycled plastic bottles and low-styrene resin, diverting over 1 million bottles from landfills annually and significantly reducing our carbon footprint.



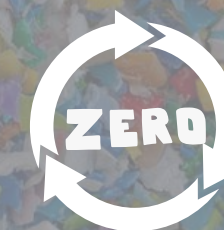
**Striving to deliver products which are 100% recyclable by 2030**



**Over 1 million plastic bottles recycled every year**



**Working towards using energy supplied entirely from renewable sources**



**Committed to reaching net-zero for our scope 1 & 2 emissions by 2030**





# WHY BUY FROM US?

Our enclosures and housings offer a robust and versatile solution for safeguarding critical infrastructure across various industries.

Engineered from high-quality FRP (Fibre Reinforced Plastic), these enclosures are designed to withstand harsh environmental conditions, providing exceptional resistance to weathering, corrosion, and impact.

Their lightweight nature facilitates easy transportation and installation, while their customisable design ensures they meet specific project requirements.

With an indefinite lifespan and minimal maintenance needs, our enclosures and housings present a cost-effective and reliable option for long-term asset protection.



**Made in  
the UK**



**Quick  
Delivery**

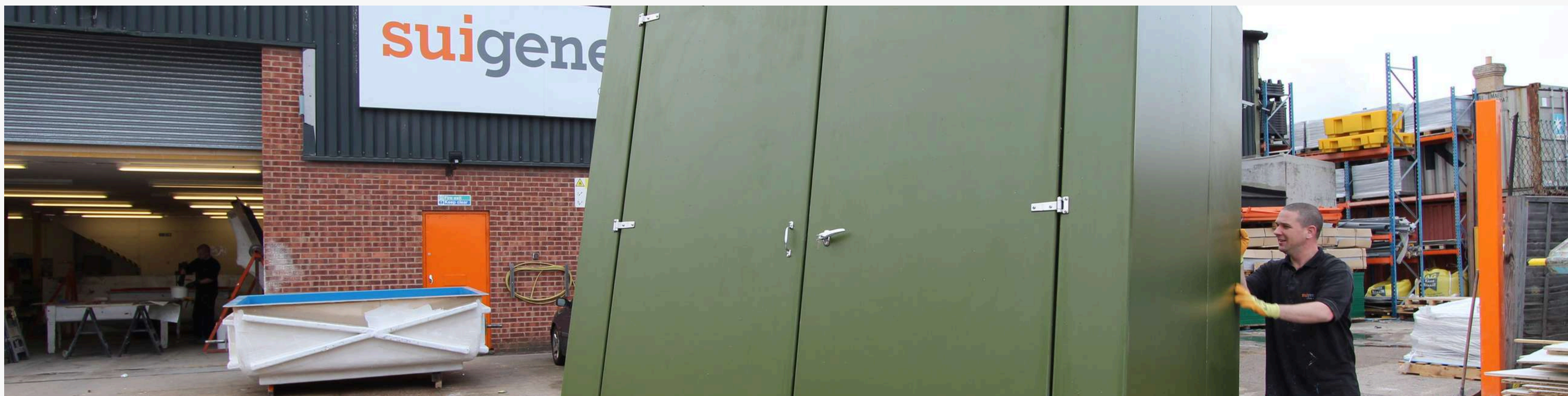


**Nationwide  
Installation**



**Bespoke  
Solutions**





# SERVICE CABINETS



**Fire,  
Corrosion  
& Chemical  
Resistant**



**Weather  
Proof**



**Vandal  
Resistant**



**Non-  
Conductive**



**Lightweight  
& Durable**



**Maintenance  
Free**

## Compact, tough and built to last.

Secure FRP cabinets designed to house utility services and equipment in outdoor or exposed environments.

### Best for:

Clients needing durable, low-maintenance protection for essential services in locations exposed to the public or the elements.



# SERVICE CABINETS

Our FRP Service Cabinets are the ideal choice for securely housing utility meters, control panels, and small-scale equipment in public or outdoor settings. Designed for durability and ease of installation, they're resistant to weather, impact, and vandalism – making them perfect for roadside, urban, or industrial environments. Available in a range of sizes and configurations, with optional ventilation and locking systems.

Typical uses:

- Water, gas and electric meter housing
- Broadband or telecom units
- Lighting and control panel enclosures



---

## Durable Construction

Manufactured from high-quality FRP for exceptional strength and durability, making them ideal for harsh outdoor environments.

---

## Low Maintenance

FRP surfaces are non-corrosive, easy to clean, and require no painting, staining, or sealing, which lowers maintenance costs.

---

## Impact and Vandal Resistant

Robust against knocks, drops, and deliberate damage, making them ideal for high-risk or public-facing installations.

---

## Ideal for high-traffic or remote locations

Ideal for utility companies, infrastructure contractors, councils, and telecom providers seeking a reliable, hassle-free solution for various environments.





# MODULAR ENCLOSURES



**Fire,  
Corrosion  
& Chemical  
Resistant**



**Weather  
Proof**



**Vandal  
Resistant**



**Non-  
Conductive**



**Lightweight  
& Durable**



**Maintenance  
Free**

---

**Flexible protection for larger systems.**

**sg**

Medium-sized, custom-built enclosures designed using modular panels, allowing flexibility in size, layout, and configuration.

**Best for:**

Organisations looking for a robust, tailored solution that can evolve with operational needs – perfect for utility and infrastructure settings.



# MODULAR ENCLOSURES

Our Modular Enclosures offer a smart, scalable way to protect more complex or sensitive equipment. Built from interlocking FRP panels, these enclosures can be configured to almost any size and layout – with bespoke access points, internal fittings, and ventilation as needed. They're lightweight, easy to transport, and require minimal maintenance once installed.

Typical uses:

- Electrical switchgear
- Pumps, valves and dosing systems
- On-site plant protection



---

## Custom-Built Designs

Custom sizes, colours, vents, cable entries, backboards, and internal mounting options are available to suit project requirements.

---

## Fast and flexible installation

Light enough for a simple lift-and-fix installation by small teams without heavy machinery – ideal for remote or difficult-to-access areas.

---

## Maintenance-free design

Non-corrosive and easy to clean. No painting, staining or sealing required – reducing ongoing maintenance costs.

---

## Adaptable for future upgrades or expansions

Our modular enclosures can be easily modified or reconfigured to adapt to new equipment or changing site needs, ensuring your investment is future-proof.



# HOUSINGS & BUILDINGS



**Fire,  
Corrosion  
& Chemical  
Resistant**



**Weather  
Proof**



**Vandal  
Resistant**



**Non-  
Conductive**



**Lightweight  
& Durable**



**Maintenance  
Free**

## Complete buildings, ready to go.

Larger, often walk-in FRP structures designed to function like small buildings – providing full weatherproof environments for equipment or personnel.

### Best for:

Projects requiring complete, turnkey building solutions with flexibility, speed of installation, and long-term durability.





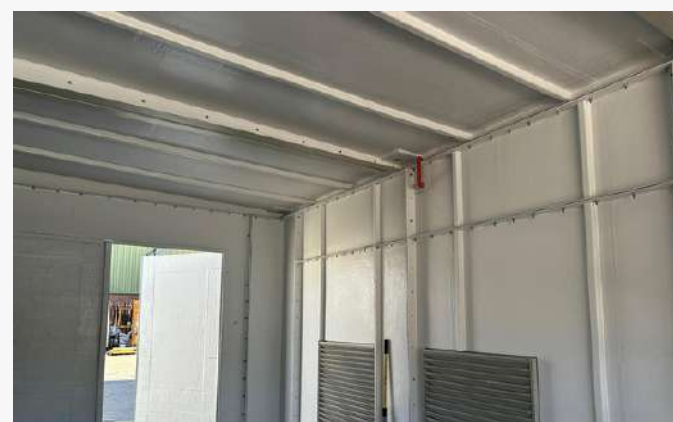


# HOUSINGS & BUILDINGS

When you need more than an enclosure, our FRP Housings and Modular Buildings deliver. These prefabricated structures are built to protect critical equipment – or provide a safe working space for your team. Designed to perform in tough conditions, they can be fitted with doors, lighting, HVAC, and more. Delivered ready to install anywhere in the UK, with full support from our experienced team.

Typical uses:

- Plant rooms and control stations
- Battery storage or backup systems
- Walk-in shelters for remote operations



## Turnkey Solution

Our FRP buildings come fully assembled and ready for installation, tailored to your specifications, saving you time and hassle.

## Weatherproof and fire-safe

Built to withstand extreme weather and engineered with fire-retardant materials, our housings offer reliable protection in even the harshest environments.

## Thermally Stable

Insulating properties safeguard internal equipment from extreme temperatures, prolonging the lifespan of electronics and control systems.

## Comfortable, safe environments for equipment or personnel

Spacious, insulated, and can be fitted with lighting, ventilation, and climate control—our housings provide a secure, practical space for both equipment and onsite operatives.





# COMMITTED TO COMPLIANCE

At Sui Generis, quality and safety are at the core of everything we do. We operate to internationally recognised standards, holding ISO 9001 (Quality Management), ISO 14001 (Environmental Management), and ISO 45001 (Occupational Health & Safety) certifications—demonstrating our commitment to delivering consistently high-performing, sustainable, and safe solutions.

All of our FRP products and systems are manufactured under rigorous quality control processes, with full traceability of materials and thorough inspection at every stage. Our products are tested for slip resistance, load-bearing performance, and fire safety, ensuring compliance with relevant British and European standards.

We also offer CE marked products where applicable, and every installation is carried out by trained professionals working to best practice guidelines and UK health and safety regulations.

With decades of experience serving safety-critical sectors such as utilities, marine, rail, and manufacturing, we understand the importance of compliance, reliability, and long-term performance.

